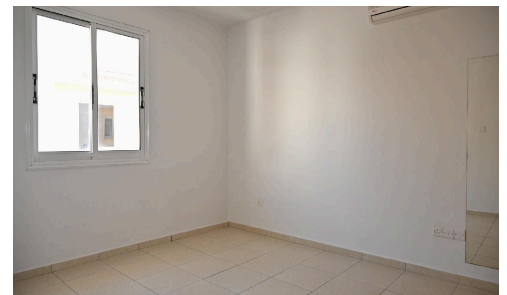
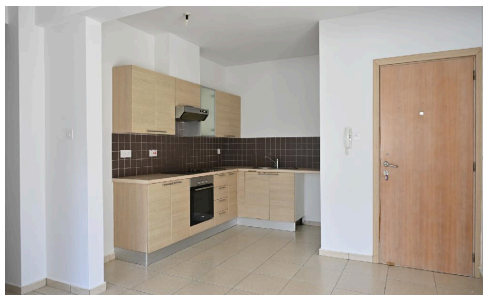
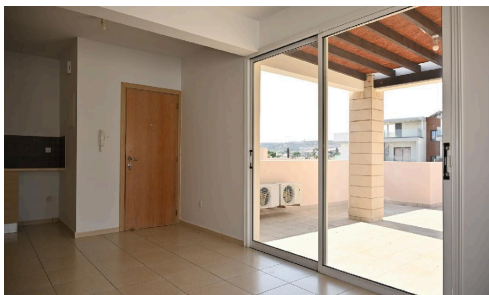


#2095



Top Floor Two Bedroom South Facing Apartment, €120,000 Pyla

 Village, Pyla, Larnaca

Two - bedroom flat in an attractive location in Pyla Community in Larnaca District, at a distance of 150 meters (approx.) west of "UCLAN" University and 900 meters (approx.) west of Larnaca - Agia Napa motorway.

Υπνοδωμάτια



Μπάνια



Εμβαδόν

 66 m²


Αξιολόγηση ενεργειακής απόδοσης





Move On Estates
New Beginnings Start Here



Move On Estates

 (+357) 24815542

 info@moveon.cy



The information presented is for informational purposes only and should not be considered as professional advice. It's recommended to independently verify all details before making any decisions. No warranties or representations are expressed.