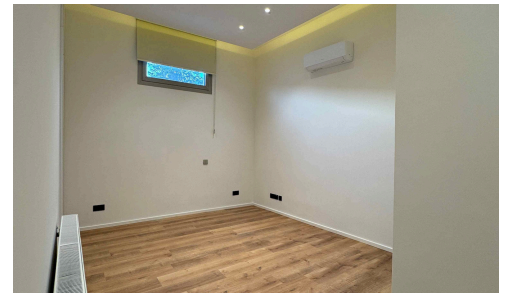
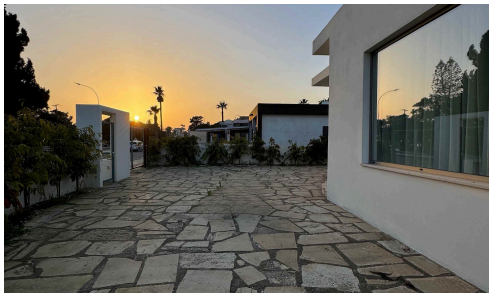


#2369



## Executive 3-Bed Bungalow for Long-Term Rent

€3,500 /μήνας

📍 Tourist Area, Pyla, Larnaca

A newly completed, fully detached executive bungalow of approximately 200m<sup>2</sup> on a 400m<sup>2</sup> plot, positioned directly opposite the beach—simply cross the road to reach the sea. Designed for long-term executive living, it focuses on comfort, practicality, and discretion rather than holiday-style use.

### Accommodation

Υπνοδωμάτια

🛏 3

Μπάνια

🚿 2

Εμβαδόν

📏 200 m<sup>2</sup>

Αξιολόγηση ενεργειακής απόδοσης

🌿 A

  
Move On Estates  
New Beginnings Start Here



**Chrysostomos Zakheos**

📧 tommy@moveon.cy



The information presented is for informational purposes only and should not be considered as professional advice. It's recommended to independently verify all details before making any decisions. No warranties or representations are expressed.