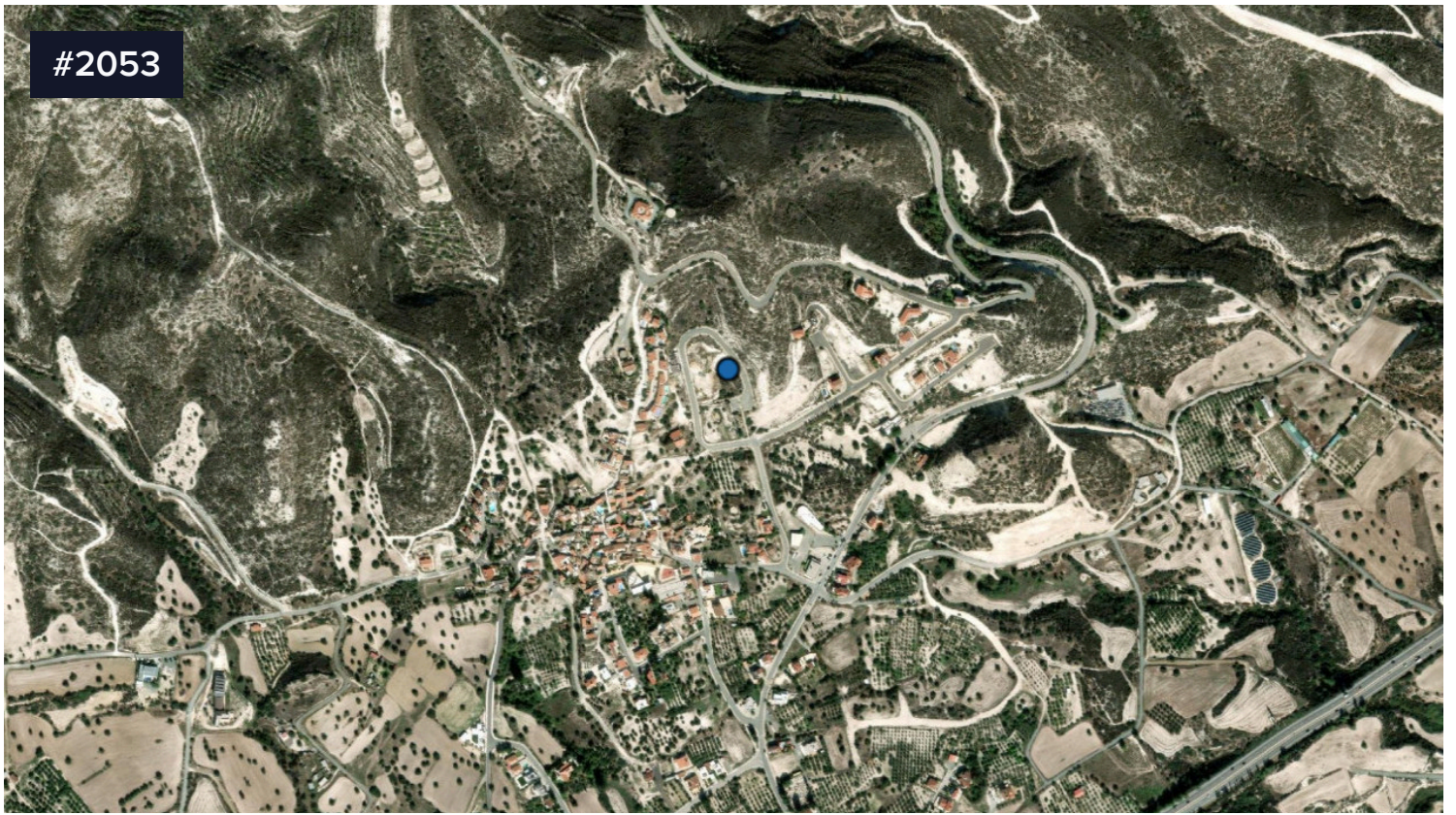


#2053



655sqm Plot in Skarinou, Larnaca

€55,000 +VAT

 Skarinou, Larnaca

The plot is located c. 700m north of the Nicosia - Limassol motorway.

The asset totals 655sqm and benefits from c. 20m road frontage along its east border. It has a rectangular shape and a sloping surface.

The immediate area comprises of residential developments as well as undeveloped parcels of land. The plot benefits from easy access to the Nicosia - Limassol motorway.

The property has the potential to be covered by all utility services (water, electricity and telecommunication).

The plot falls within residential planning zone H3 with 60% building density, 35% coverage, 2 floors and a maximum height of 8.3m.


Area


 **655 m²**


Move On Estates
New Beginnings Start Here



Move On Estates

 (+357) 24815542

 info@moveon.cy



The information presented is for informational purposes only and should not be considered as professional advice. It's recommended to independently verify all details before making any decisions. No warranties or representations are expressed.