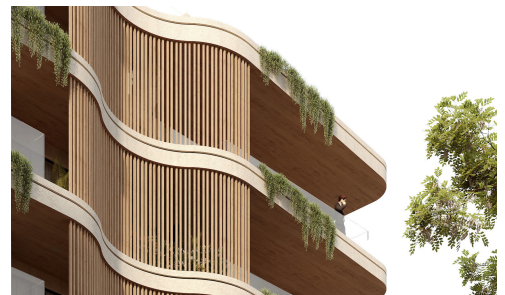


#2258



Modern One Bed Apartment in Livadia – Boutique New Development Near the Sea

€172,000 +VAT

 Tourist Area, Livadia, Larnaca

This contemporary boutique residential development is located in one of Larnaca's fastest-growing coastal areas, just 950 meters from the sea and within easy reach of the city center, marina, and main road connections.

The project consists of a four-storey building with 15 modern apartments, offering a selection of one-, two-, and three-

Bedrooms

 1

Bathrooms

 1

Covered

 50 m²


Energy efficiency rating


 A


Move On Estates
New Beginnings Start Here



Move On Estates

 (+357) 24815542

 info@moveon.cy



The information presented is for informational purposes only and should not be considered as professional advice. It's recommended to independently verify all details before making any decisions. No warranties or representations are expressed.