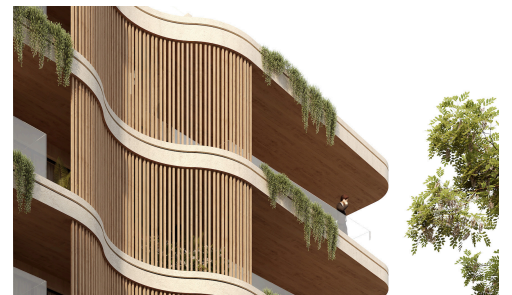


#2259



## Modern Two Bed Apartment in Livadia – Boutique New Development Near the Sea

**€279,000** +VAT

 Tourist Area, Livadia, Larnaca

This contemporary boutique residential development is located in one of Larnaca's fastest-growing coastal areas, just 950 metres from the sea and within easy reach of the city center, marina, and main road connections.

The project consists of a four-storey building with 15 modern apartments, offering a selection of one-, two-, and three-

Bedrooms

 **2**

Bathrooms

 **2**

Covered

 **78 m<sup>2</sup>**


Energy efficiency rating

 **A**

  
Move On Estates  
New Beginnings Start Here



**Move On Estates**

 (+357) 24815542

 info@moveon.cy



The information presented is for informational purposes only and should not be considered as professional advice. It's recommended to independently verify all details before making any decisions. No warranties or representations are expressed.